

12-A—Refrigeration

SOME splendid bargains in used electric... Mike General Electric, Kelvinator, Stewart-Warner, Majestic and others.

131—Sporting Goods

FOR sale, my personal shotgun, looks brand new, reasonable price. P-8712.

132—Business Equipment

STORE, office, cash and bar fixtures, used, rebuilt, cash or terms. Fixtures bought, sold and exchanged.

Office Desks, Chairs

Used and refinished. New suite, new and used filing cabinets. PATRICK ANDERSON CO., 230 BROADWAY.

133—Machinery and Tools

For Every Purpose. For sale, complete, rebuilt and saves on operating costs. Includes invited.

York Sales and Service

REFRIGERATION. For Every Purpose. For sale, complete, rebuilt and saves on operating costs.

516 WATER ST.

Oil Well Exchange, Inc.

1915 So. FRESA. K-1751. Fort Worth Spudgers "C" and "D".

CATERPILLAR tractors, reconditioned.

Tracing tractors and graders, excavators, rock crushers, plows, contractor's equipment of every description.

ONE 24-inch planer with 7 1/2 p. motor.

one 36-inch band saw, one 6-foot swing cut-off saw with Dido band, one one inch hand sander, one 5 h. p. motor, Alamo Tank & Laundry.

Charles Wiggins & Co.

K-3241, San Antonio. P. O. Box 245. PIPE—CASING—TUBING.

Rips Pipe & Supply Co.

1501 SOUTH ALAMO ST. F-2401. 1936 Delta Machinery.

USED Ohio ensilage cutter.

San Antonio Impement Co., 347 E. Commerce.

USED one-horse hay presses.

A. Implemment Co., 347 E. Commerce.

SMALL used combination corn sheller.

Implemment Co., 347 E. Commerce.

134—Building Materials

LUMBER—LUMBER

Big Money Saving Prices. All Standard Grades. One Block Off S. Flores St.

NOTICE! NOTICE!

On account of construction of underground water tunnel...

GOOD LUMBER CHEAP

BLUE BONNET LUMBER CO. 601 Buena Vista St. P-2823.

135—Seeds, Plants, Fertilizer

Carpet grass grows under trees. Never too late to plant our way. Evergreens, natives, over 100 varieties.

139—Wanted Merchandise

WE PAY MORE FOR OLD GOLD. GOLD STORE. 321 Alamo Plaza.

Furniture Wanted

More cash paid by Jesse M. Saudera. Any amount. Call P-8701.

WE PAY CASH

For used furniture and rugs. Dial G-2693 for quick service.

We Buy

Your household goods. Anything. PAY CASH. CALL P-4632.

XII—LIVE STOCK, SUPPLIES

140—Pet Stock and Supplies. PETS have a hand in the job with Express and Evening News.

141—Poultry, Fowls and Supplies

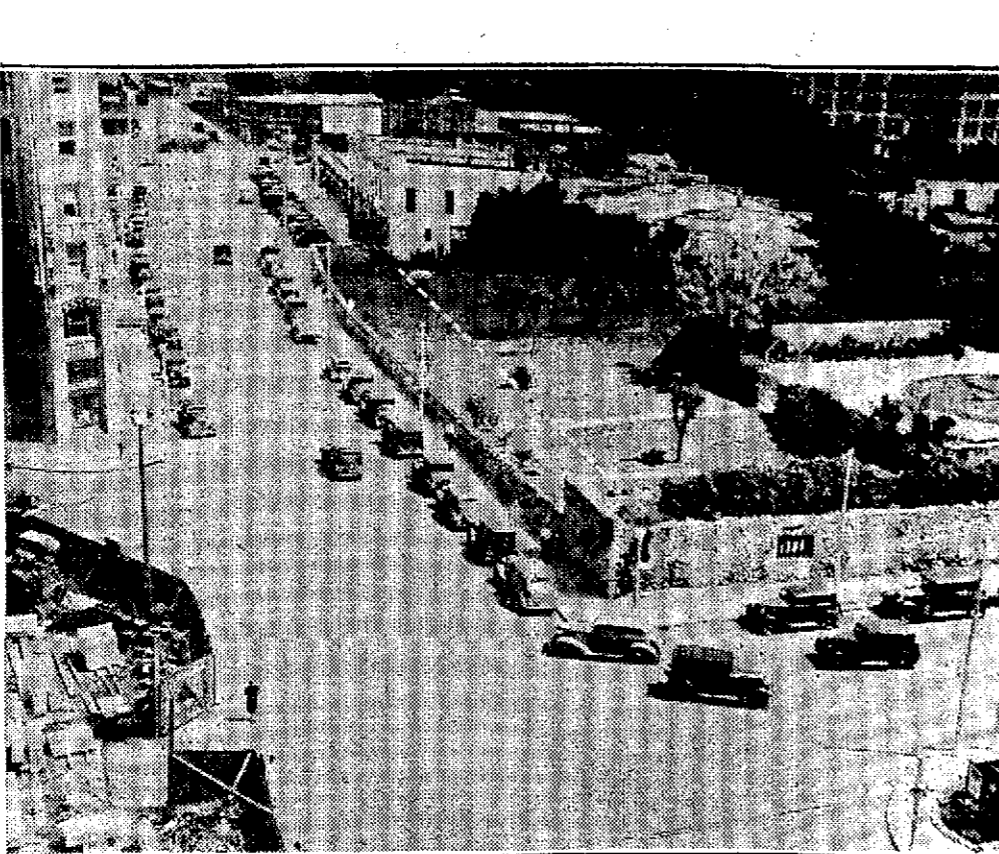
BABY chicks on hand, 75c and up. Crown Japanese chicks, 43c Devine St. 2104.

142—Live Stock—Equipment

750 HEAD mixed sheep in the wool TOPS Johnson City Realty Co. JOHNSON CITY, TEXAS.

MANUFACTURERS of collars, saddles, bridles, harness, etc.

FINE 4 and 5-year-old Jersey cows with baby calves, heavy producers.



WIDER HOUSTON STREET—

In carrying out plans for a State park around the Alamo the State will deed San Antonio a narrow strip of land along Houston Street in exchange for the fire station property on the other side of the area.

ALLRED AND NESBIT INVITED TO BANQUET

R. William Archer, secretary-manager of the San Antonio Chamber of Commerce, is scheduled to leave San Antonio Thursday for Austin, where he will extend a personal invitation to Gov. James V. Allred and Brig. Gen. Carl Nesbit, adjutant general of the 36th Division, Texas National Guard, to attend the formal banquet to be given in honor of Maj. Gen. George P. Rains on Sept. 13.

XII—LIVE STOCK, SUPPLIES

142—Live Stock—Equipment. A-1 Jersey cow, just fresh, 1435 W. Laurel. 2 JERSEY COWS for sale, reasonable, 154 W. Harding Blvd.

143—Feeding, Pasturing

OLD experienced cowman wants job owning ranch or farm for small wages and pasture for small bunch of cows. Call for references, Box 104, Saspam, Tex.

KEEP THEM FIT

Use our satisfied with egg production. Staffel's Feed is the best for laying hens.

REAL ESTATE TRANSFERS

The following six real estate transfers having a total value of \$120,000 were filed in the county clerk's office: Ira and Frankie Frederick, by John F. Perry, trustee, to Donna Mae Perry.

BUILDING PERMITS

Thirteen building permits for new construction worth \$45,120 were issued by the city building inspector's office.

140—Pet Stock and Supplies

141—Poultry, Fowls and Supplies. BOSTON'S have a hand in the job with Express and Evening News.

142—Live Stock—Equipment

750 HEAD mixed sheep in the wool TOPS Johnson City Realty Co. JOHNSON CITY, TEXAS.

MANUFACTURERS of collars, saddles, bridles, harness, etc.

FINE 4 and 5-year-old Jersey cows with baby calves, heavy producers, 105 White Ave., Harlandale.

CURB MART MOVES MOSTLY LOWER

(By Associated Press) NEW YORK, Sept. 9.—Fractional variations, the majority of them on the downside, ruffled the surface of the curb market today.

U. S. TREASURY CERTIFICATES AND NOTES

Table with columns for Issue, Maturity, Bid, Asked. Includes items like 1 1/2% Dec. 15, 1938, 101.10, 101.10.

HOME OWNERS' LOAN CORPORATION BONDS

Table with columns for Issue, Maturity, Bid, Asked. Includes items like 3 1/2% May 1, 1924-44, 103.23, 103.25.

FEDERAL FARM MORTGAGE CORPORATION BONDS

Table with columns for Issue, Maturity, Bid, Asked. Includes items like 3 1/2% May 1, 1924-44, 103.23, 103.25.

FEDERAL LAND BANK FARM LOAN BONDS

Table with columns for Issue, Maturity, Bid, Asked. Includes items like 3 1/2% July 1, 1925-45, 101.9, 101.9.

VITAL STATISTICS

MARRIAGE LICENSES. Fred Acosta and Orelia Vela. A. S. Collier and Violet Bell. Joe Ortiz and Louisa Ramirez.

NEW DIRECTOR—

Miss Helen Lynch, newly appointed local director of the Bexar County Council of Girl Scouts, shown seated at her desk as she assumed her position Wednesday.

GIRL SCOUTS GET COUNTY DIRECTOR

Council Opens Headquarters in Maverick Building. Miss Helen Lynch, newly appointed local director of the Bexar County Council of Girl Scouts, shown seated at her desk.

HIGHWAY SAFETY CONFERENCE TOPIC

Red Cross Directors to Show Film on First Aid. Highway safety work was stressed Wednesday at a meeting of the board of directors, Bexar County chapter of the Red Cross.

CURB MARKET

Table with columns for Stock Name, High, Low, Close. Includes Michigan, Mid St Pet A, Midland, etc.

STOCK LEADERS

Table with columns for Stock Name, High, Low, Close. Includes American, General, etc.

STOCK AVERAGES

Table with columns for Index Name, Value. Includes Dow Jones, S&P 500, etc.

INACTIVE STOCKS

Table with columns for Stock Name, High, Low, Close. Includes Am Bk, Am Bk, etc.

DOMESTIC BONDS

Table with columns for Bond Name, High, Low, Close. Includes Ala Pow, Ala Pow, etc.

U. S. TREASURY RECEIPTS

Table with columns for Receipt Name, Amount. Includes Receipts, Receipts, etc.

WASHINGTON, Sept. 9.

The Department of the Interior today reported that the receipts for the week ended Sept. 5 totaled \$1,361,361, an increase of 103 cars over the preceding week.

DOCTOR DECLARED SUICIDE

Death of Dr. J. A. Daniel, 71, retired physician, last Saturday was suicide, according to Justice of the Peace Ben Corrigan.

CARLOADINGS

ST. LOUIS, Sept. 9.—The St. Louis-San Francisco Railway today reported its carloadings and receipts from consignors for the week ended Sept. 5 totaled 15,361 cars, an increase of 103 cars over the preceding week.